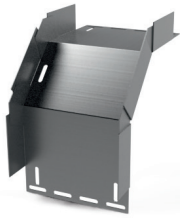
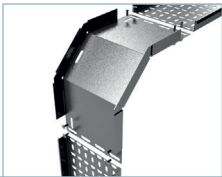
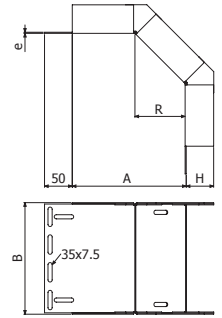




**CXU**

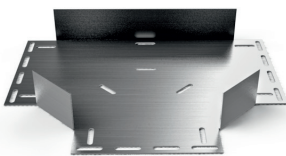


	B		H		GC			
	mm	inch	mm	inch	e=2mm		e=2,5mm	
					REF.	(kg/ud)	REF.	(kg/ud)
CXU 50x15xe	50	2"	15	3/5"	2/2429	0,42		
CXU 100x15xe	100	4"	15	3/5"	2/2430	0,70		
CXU 150x15xe	150	6"	15	3/5"	2/2431	1,07		
CXU 200x15xe	200	8"	15	3/5"	2/2432	1,49		
CXU 300x15xe	300	12"	15	3/5"	2/2433	2,94		
CXU 50x30xe	50	2"	30	1 1/6"	2/2437	0,61	2/2527	0,89
CXU 100x30xe	100	4"	30	1 1/6"	2/2438	0,89	2/2528	1,07
CXU 150x30xe	150	6"	30	1 1/6"	2/2439	1,27	2/2529	1,52
CXU 200x30xe	200	8"	30	1 1/6"	2/2440	1,71	2/2530	2,05
CXU 300x30xe	300	12"	30	1 1/6"	2/2441	3,29	2/2531	3,95
CXU 400x30xe	400	16"	30	1 1/6"	2/2442	4,40	2/2532	5,28
CXU 500x30xe	500	20"	30	1 1/6"	2/2443	5,55	2/2533	6,66
CXU 600x30xe	600	24"	30	1 1/6"	2/2444	6,70	2/2534	8,04
CXU 50x50xe	50	2"	50	2"	2/2445	0,86	2/2535	1,03
CXU 100x50xe	100	4"	50	2"	2/2446	1,14	2/2536	1,37
CXU 150x50xe	150	6"	50	2"	2/2447	1,55	2/2537	1,86
CXU 200x50xe	200	8"	50	2"	2/2448	2,00	2/2538	2,45
CXU 300x50xe	300	12"	50	2"	2/2449	3,69	2/2539	4,02
CXU 400x50xe	400	16"	50	2"	2/2450	4,86	2/2540	5,38
CXU 500x50xe	500	20"	50	2"	2/2451	6,43	2/2541	7,74
CXU 600x50xe	600	24"	50	2"	2/2452	8,92	2/2542	10,1

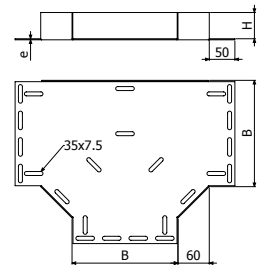


4/100 x B1 (2/6826 - GC)

**TEU**



	B		H		GC			
	mm	inch	mm	inch	e=2mm		e=2,5mm	
					REF.	(kg/ud)	REF.	(kg/ud)
TEU 50x15xe	50	2"	15	3/5"	2/2789	0,41		
TEU 100x15xe	100	4"	15	3/5"	2/2790	0,79		
TEU 150x15xe	150	6"	15	3/5"	2/2791	1,27		
TEU 200x15xe	200	8"	15	3/5"	2/2792	1,82		
TEU 300x15xe	300	12"	15	3/5"	2/2793	3,19		
TEU 50x30xe	50	2"	30	1 1/6"	2/2797	0,49	2/2888	0,58
TEU 100x30xe	100	4"	30	1 1/6"	2/2798	0,88	2/2889	1,07
TEU 150x30xe	150	6"	30	1 1/6"	2/2799	1,38	2/2890	1,66
TEU 200x30xe	200	8"	30	1 1/6"	2/2800	1,95	2/2891	2,34
TEU 300x30xe	300	12"	30	1 1/6"	2/2801	3,35	2/2892	4,02
TEU 400x30xe	400	16"	30	1 1/6"	2/2802	5,01	2/2893	6,01
TEU 500x30xe	500	20"	30	1 1/6"	2/2803	7,18	2/2894	8,62
TEU 600x30xe	600	24"	30	1 1/6"	2/2804	9,59	2/2895	11,51
TEU 50x50xe	50	2"	50	2"	2/2805	0,60	2/2896	0,72
TEU 100x50xe	100	4"	50	2"	2/2806	1,01	2/2897	1,21
TEU 150x50xe	150	6"	50	2"	2/2807	1,52	2/2898	1,82
TEU 200x50xe	200	8"	50	2"	2/2808	2,11	2/2899	2,43
TEU 300x50xe	300	12"	50	2"	2/2809	3,54	2/2900	4,11
TEU 400x50xe	400	16"	50	2"	2/2810	5,33	2/2901	6,78
TEU 500x50xe	500	20"	50	2"	2/2811	7,44	2/2902	9,05
TEU 600x50xe	600	24"	50	2"	2/2812	9,89	2/2903	11,45



4/100 x B1 (2/6826 - GC)